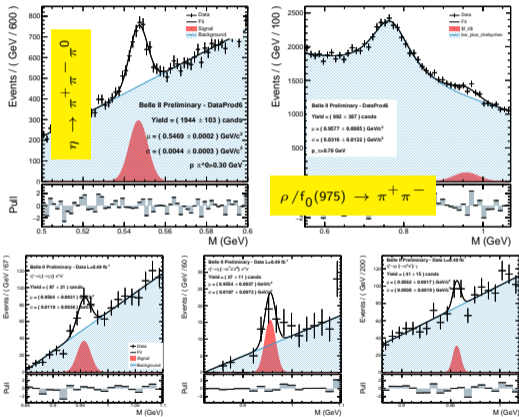


Re-discovery of light resonances (phasell)

BELLE2-NOTE-PH-2018-038



$$\eta' \rightarrow (\eta \rightarrow \gamma\gamma/\pi^+\pi^-\pi^0)\pi^+\pi^-/\rho\gamma$$

TDCPV $B^0 \rightarrow \eta' K_S^0$ (phaselll) DataChallenge

