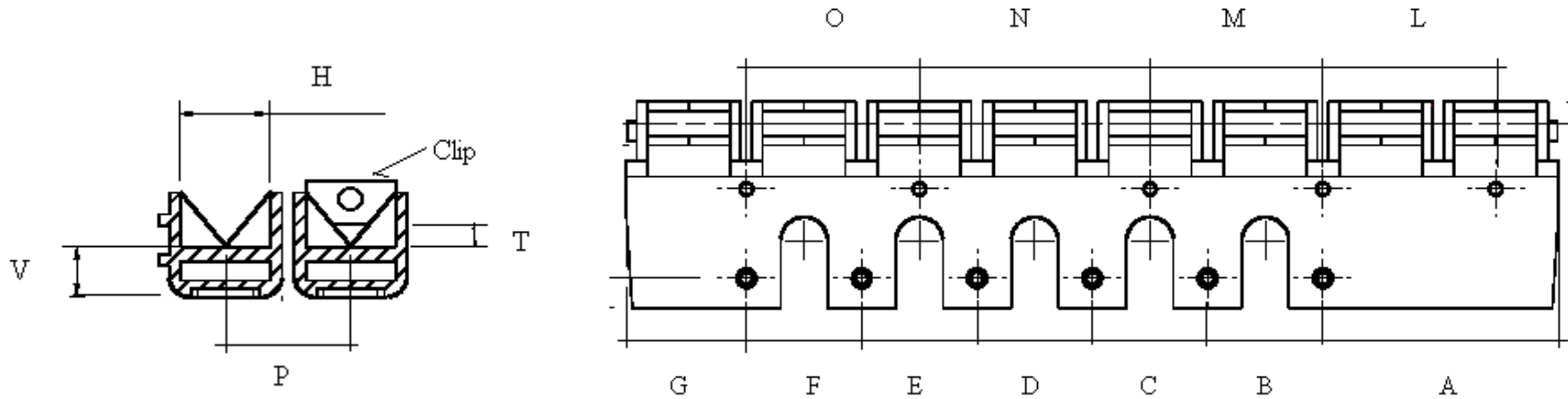


8-cells PCB holders



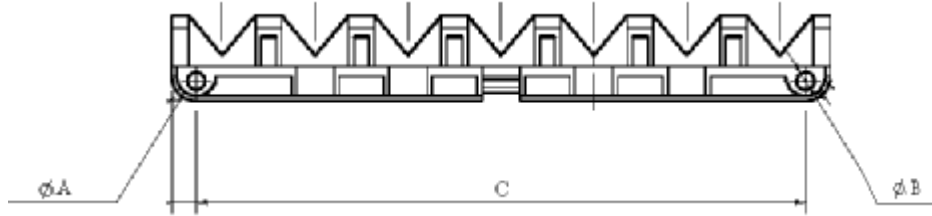
(mm)	Cell 1	Cell 2	Cell 3	Cell 4	Cell 5	Cell 6	Cell 7	Cell 8	Expected
H	13,37	13,42	13,48	13,58	13,55	13,49	13,46	13,45	13,22
I	4,00	4,07	4,06	4,05	4,01	4,07	4,05	4,06	4,00
V	7,50	7,60	7,56	7,58	7,63	7,62	7,60	7,55	7,50
T	0,22	0,25	/	/	/	/	/	/	/

(mm)	Measure	Expected
A	37,32	37,66
B	18,52	18,42
C	18,59	18,42
D	18,41	18,42
E	18,42	18,42
F	18,58	18,42
G	19,22	19,24
L	27,70	27,63
M	27,68	27,63
N	37,02	36,84
O	27,66	27,63

(mm)	C1 - C2	C2 - C3	C3 - C4	C4 - C5	C5 - C6	C6 - C7	C7 - C8	Previsto
P	18,24	18,45	18,40	18,56	18,40	18,37	18,26	18,42

8-cells PCB holders

(mm)	Hole diameter	Measure	Expectation
A		3,42	3,5
B		3,52	3,5
(mm)	Interaxis	Measure	Expectation
C		121,60	120,78



(mm)	F1	F2	F3	F4	F5
Hole diameter	2,22	2,18	2,25	2,19	2,19

